



FESTIVAL OF SAILS
G E E L O N G E S T . 1 8 4 4

PORT PHILLIP and CORIO BAY
26th – 28th JANUARY 2024

Regatta Chairman: Paul Buchholz

FOS Race Committee: Denis Thompson, Kevin Wilson, Steve Kidson.

National Jury: Philippe Mazard (IJ), Chairman
Richard Slater (IJ), Mark Gallagher (NJ), Mal Eaton (NJ), Michael Naughton (NJ)

Principal Race Officer: Denis Thompson (IRO)

Course Race Officers: Kevin Wilson, Ross Wilson, Stephen Aulich, Steve Neunhoffer, Steve Kidson, Andrew King,
others tbc

Measurer: John Duffin



Commodore – Roger Bennett
Vice Commodore – Paul Buchholz

Rear Commodore – Chris Manton
Club Captain – Brendan Garner
Treasurer – Philip Francis

General Manager – Steve Harper
Sailing & Regatta Manager – Drew Malcolm

Phone: (03) 5229 3705 Fax: (03) 5223 2768
email: sailing@rgyc.com.au

EVENT WEBSITE: www.festivalofsails.com.au



GENERAL SAILING INSTRUCTIONS

Royal Geelong Yacht Club Inc. as the organising authority will conduct FESTIVAL OF SAILS 2024 on the waters of Port Phillip and Corio Bay from 26th to 28th January 2024.

COMMERCIAL SHIPPING

Port Rule 62B for Victorian Proclaimed Ports, including the waters of Port Phillip and Corio Bay requires small vessels in all circumstances to keep clear of commercial shipping.

1. RULES

- 1.1 Festival of Sails 2024 will be governed by the "rules" as defined in the 2021 - 2024 World Sailing (WS) Racing Rules of Sailing (RRS), Australian Sailing (AS) Special Regulations (SR) and the applicable Class Rules, except as any of these are changed by the sailing instructions.
- 1.2 Flags, boom stickers and hull decals may be provided by the event sponsors. If provided, flags shall be flown from the backstay at all times whilst racing, boom stickers shall be attached to each side of the boom and hull decals shall be attached to the topsides approximately one metre from each side of the bow. Boats shall fly the supplied event "Battle Flag" at all times when moored in the Royal Geelong Yacht Club (RGYC) marina. Boats failing to comply with these instructions may be protested by the Race Committee only. This alters RRS 60.1 and 60.3
- 1.3 A series may not be conducted if there are less than seven (7) entries.
- 1.4 A National Jury has been appointed in accordance with RRS 70.5 and AS Addendum A.
- 1.5 The following alterations have been made to the Racing Rules of Sailing: -
RRS 51: A boat with movable ballast or variable ballast (within the meaning of those terms in the special regulations) may move that ballast for the purpose of changing trim or stability.
RRS 52 is amended to permit powered winches for boats over 12.0m LOA.

1.6 SPECIAL REGULATIONS

The following AS Special Regulations (SR) Categories will apply:

Classes	AS SR Category
TP 52 Series	5
Passage Rating Series	5
Passage Spinnaker Series	5
Mornington Peninsula Series	5
Passage Non-Spinnaker Series	5
Multihull Series	5
Guyon Wilson Class Series	7
Melges 24 Class Australian Championship	7
S80 Class Series	5
Classic Boat Series	5
Passage Mini Series	5
Victoria Sailing League	AS SR Part 2
International Cadet Class Sprint Series	AS SR Part 2

- 1.7 The Race Committee may inspect any yacht prior to or during the regatta for Special Regulation and Class Rule compliance.
- 1.8 After starting and prior to finishing, a boat that cannot manoeuvre safely and is in danger of hindering any commercial shipping shall use her engine to clear such shipping. The engine use must be logged and be lodged with the Race Committee as soon as practicable after finishing. The Race Committee will decide what action (if any) shall be taken. This alters RRS 42.

2. ELIGIBILITY

Eligibility is in accordance with the Notice of Race.

3. NOTICES TO COMPETITORS

- 3.1 The Official Notice Board will be the **Online Notice Board**. Notices will be posted on the online notice board on the event website, [Online Notice Board](#)



4. CHANGES TO SAILING INSTRUCTIONS

- 4.1 Any changes to sailing instructions made ashore will be posted on the online notice board at least 2 hours before the scheduled start time of the first race for which they will take effect. Changes to the schedule of races will be posted on the online notice board before 2000hrs on the day preceding the race concerned.
- 4.2 Changes to the Sailing Instructions may be made afloat at any time and will be indicated by the display of Code Flag 3rd Substitute accompanied by two sound signals. The change will be communicated either orally on the designated course VHF channel or in writing (includes SMS).

5. COMMUNICATION

- 5.1 The following communications may be made by the race committee on VHF: time checks and starting times, starting order and designation of race areas, confirmation of any visual signal displayed, courses including bearing and distance to the first mark, change of course, shortening, postponement, abandonment and other information explaining the intentions of the race committee. The race committee may also transmit course and other information by Short Message Service (SMS). Delay in the broadcast of these calls, or the order in which they are made, or any omission or failure in the transmission or reception of these, will not be grounds for request for redress by a boat. This changes RRS 60.1(b).

5.2 Daily Reporting:-

The race committee will contact each boat by SMS between 0830 hrs and 0900 hrs each race day. The SMS message will provide a boat specific Web link. Each yacht shall respond via the Web link within 90 minutes of her scheduled start indicating her intention to start and the number of Persons on Board (P.O.B.)

6. SIGNALS MADE ASHORE

- 6.1 Signals will be displayed from the flagpole of RGYC located to the north of the main building.
- 6.2 Code Flag "AP" (Answering Pennant), with two sounds (one sound when lowered) means, "The race is postponed. The Warning Signal will be made not less than 60 minutes after this signal is lowered". (This changes RRS Race Signals "AP")

7. SCHEDULE OF RACES

Please refer to each Series' Sailing Instruction Appendix for further detail

Classes/Divisions	FRI 26 th	Sat 27 th	Sun 28 th
TP 52 Series	Passage	3 x WL	WL & PG
Passage Rating Series	Passage	2 x SC	SC & PG
Passage Spinnaker Series	Passage	2 x SC	SC & PG
Mornington Peninsula Series	Passage	2 x SC	SC & PG
Passage Non-Spinnaker Series	Passage	SC	SC & PG
Multihull Series	Passage	LSC	SC & PG
Guyon Wilson Class Series	3 x WL	3 x WL	2 x WL & PG
Melges 24 Australian Championships	THUR 25 th	3 x WL	2 x WL & PG
	2 x WL		
S80 Class Series	Passage	2 x WL	1 x WL & PG
Classic Boat Series	Passage	SC	PG
Passage Mini Class	Passage	SC	PG
Victorian Sailing League	Multiple	Multiple	PG
International Cadet Class Series			Up to 6 X WL

Passage race - Melbourne to Geelong

Passage race - Mornington to Geelong

Corio Bay, Geelong

WL –windward / leeward course

SC - special course (fixed marks)

PG – prize giving 1700hrs 28th January

8. OFFICIAL VESSELS

Official Vessels may display a 'Festival of Sails' flag for identification.



9. PROTEST AND REQUEST FOR REDRESS

- 9.1 Protests are to be lodged at the Regatta Office within 90 minutes of the finish time of the last boat in the protesting boat's Class or Division in the last race of the day.
- 9.2 Notification of the details of protest hearings will be placed on the Online Notice Board as soon as possible to inform competitors where and when there is a hearing in which they are parties to a protest or named as a witness. These notices are deemed to fulfil the requirements of RRS 63.2. Representatives of boats, who are parties to hearings, and their witnesses, are advised to remain on call in the vicinity of the Regatta Office (or any other place as directed by the Jury).
- 9.3 RRS 66.2a is changed by adding: "On her last day of racing, a party to the hearing may ask for a reopening no later than half an hour after being informed of the decision."
- 9.4 In accordance with RRS 64.2, the Jury may award any other penalty at their discretion.

10. ARBITRATION

- 10.1 Arbitration will be used in accordance with RRS Appendix "T".
- 10.2 The Arbitrator may be a member of any subsequent Jury or may give evidence to the Jury.

11. RESULTS

Results will be posted as soon as practicable after the last yacht in each Class finishes the last race each day to the event website at www.festivalofsails.com.au

12. SCORING SYSTEM

- 12.1 The "Low Point System" RRS Appendix A will apply except if there are four races or less sailed all race scores will be counted. One race constitutes a series.
- 12.2 Number of scheduled races and Handicap system.

Series	Races	Handicap System
TP 52 Series	6	IRC & TPR
Passage Rating Series (Divs 1, 2 & 3)	4	AMS, ORC
Passage Spinnaker Series (Divs 1, 2 & 3)	4	EHC (Event Handicap)
Mornington Peninsula Series	4	EHC (Event Handicap)
Passage Non-Spinnaker Series	4	EHC (Event Handicap)
Multihull Series	3	OMR (Offshore Multihull Rule) & EHC
Guyon Wilson Class Series	8	Scratch (No Handicap)
Melges 24 Class Australian Championship	10	Scratch (No Handicap)
S80 Class Series	4	Scratch & EHC (Event Handicap)
Classic Boat Series	3	EHC (Event Handicap)
Passage Mini Class	2	EHC (Event Handicap)
Victorian Sailing League	multiple	Scratch (No Handicap)
International Cadet Series	10	Scratch (No Handicap)

- 12.3 The Teams Trophy Series will be scored on the Club with the lowest total score of the three (3) best performing boats on AMS for boats entered in Passage Rating Series
The Club Team with the lowest total score over the series shall be the winner.

13. ALTERNATIVE PENALTIES

For Windward / Leeward Courses 1 – 6, the Two Turns penalty (RRS 44.1) is changed to a One Turn penalty except for infringements that occur within the zone of a rounding mark.
Multihull Series races, the Two Turns penalty (RRS 44.1) is changed to a One Turn penalty.

14. TIME LIMIT

- 14.1 The time limits are as described in each Class Appendix.
- 14.2 Boats still racing when her time limit expires will be scored points equal to the number of boats finishing within the time limit plus 30% of the number of starters rounded to the nearest whole number, but no more points than the number of starters. Such boats will be scored Time Limit Expired (TLE). This changes RRS 35, A4.2 and A5.

15. HANDICAPS

IRC ratings will be those supplied by Australian Sailing (or other National Authority)
ORC (ORCi or ORCc) will be those supplied by Australian Sailing (or other National Authority).



Boats will be scored using Time on Time (ToT) General Purpose rating.
 AMS ratings will be those supplied by Yacht Racing Services Association.
 Multihulls handicaps (OMR) will be those supplied by Multihull Yacht Club Queensland.
 One Design Classes including Guyon Wilson, Melges 24 and S80 will have no handicap and will be scored on elapsed time.
 Event Handicaps (EHC) will be supplied by the regatta Handicap Committee. EHC are performance-based handicaps and may be changed at any time.
 The decision of the Handicap Committee or their representative on any handicap matter will be final and will not be grounds for requests for redress. This alters RRS 60.1 (b).

16. CHARTS

All boats participating in events for Keel & Multihull classes shall carry a current or fully amended paper chart AUS157 or Electronic Chart System (ECS) covering the sailing area. All electronic chart data is to be downloaded to an ECS or available on a data storage device prior to starting and not dependent on internet or phone service connection. It is strongly recommended that Chart AUS 153 be carried also.

17. DISCLAIMER OF LIABILITY

- 17.1 All those taking part in races conducted by RGYC do so at their own risk and responsibility.
 17.2 RGYC is not responsible for the seaworthiness of a boat whose entry is accepted or the sufficiency or adequacy of its equipment.
 17.3 RGYC is not responsible for any damage or injury, either ashore or at sea to persons or boats which might result from participating in races conducted by the club.
 17.4 Attention is drawn to World Sailing Fundamental Rule 3: Decision to race "The responsibility for a boat's decision to participate in a race or to continue racing is hers alone".

18. TROPHIES

- 18.1 Trophies will be awarded to First, Second and Third of each division or class in a series.
 18.2 Trophies and prizes will be awarded on the main stage at RGYC at 5:00 PM after racing on Sunday 28th January 2024 for all Series.
 18.3 Trophies for the Passage races to Geelong will be presented on the main stage at approximately 1830hrs after racing on Friday 26th.
 18.4 **Schedule of Trophies**

The organising committee may alter this schedule of allocation of trophies.

TROPHY	DIVISION	PLACE
RGYC Bull's Roar Trophy	Fastest Boat Melbourne to Geelong Race	1 st
Monohull Trophy	Line Honours Melbourne to Geelong Race	1 st
Multihull Trophy	Line Honours Melbourne to Geelong Race	1 st
IRC Trophy	IRC overall Melbourne to Geelong Race	1 st
Helmswoman Trophy	First Helmswoman Melbourne to Geelong Passage Race	1 st
Youth Trophy	First Under 25 Skipper Melbourne to Geelong Passage Race	1 st
Geelong Advertiser Teams Trophy	AMS Teams from Passage Rating series	1 st ,
TP 52 Series Trophy	TP52 Class TPR & IRC	1 st , 2 nd , 3 rd
Passage Rating Series Trophy	Divisional AMS & ORC(c or i) & IRC	1 st , 2 nd , 3 rd
Passage Spinnaker Trophy	Divisional EHC	1 st , 2 nd , 3 rd
Mornington Peninsula Trophy	Divisional EHC	1 st , 2 nd , 3 rd
Multihull Trophy	Multi Hull Series OMR & EHC	1 st , 2 nd , 3 rd
Guyon Wilson Trophy	Guyon Wilson Class Series	1 st , 2 nd , 3 rd
Melges 24 Aus. Championship Trophy	Melges 24 Class	1 st , 2 nd , 3 rd
S80 Series Trophy	S80 Class Scratch & EHC	1 st , 2 nd , 3 rd
Classic Yacht Series Trophy	Classic Yacht Class EHC	1 st , 2 nd , 3 rd
Passage Mini Series Class Trophy	Passage Mini Trophy	1 st , 2 nd , 3 rd
National Sailing League	Open and Youth	1 st , 2 nd , 3 rd
B.I.A Victoria Trophy	Best Performed Victorian Built Boat	1 st
International Cadet Series	W L Curtis Trophy	1 st , 2 nd , 3 rd

APPENDIX "A"

TP 52 SERIES

1. SCHEDULE OF EVENTS

Date	Race no.	Course area	Course type	Time of 1 st Warning Signal
FRIDAY 26 TH	1	Melbourne to Geelong Race Southern Start Line	Passage Race	0925hrs
SATURDAY 27 TH	3	Course Area "C"	3 x W/L	1225hrs
SUNDAY 28 th	5	Course Area "C"	2 x W/L	1055hrs
	Prize giving RGYC			1700hrs

The last time for warning signal on Sunday 28th is 1400 hrs

Please note: - Course Areas are as indicated in Appendix "K", Course Area Diagrams.

2. CLASS FLAGS

DIVISION	CLASS FLAG	BACKSTAY FLAG
Melbourne to Geelong Passage Race Mass Start	Int. Code Flag "D"	As noted below
TP 52 Class	White Flag	White

3. COURSES

Other than the Melbourne to Geelong race, the course to be sailed will be selected from the list of courses, Appendix "J", 1 WINDWARD / LEEWARD COURSES and will be indicated by a course board displayed from the Starting Vessel.

Description of Marks

Melbourne to Geelong Race	
All marks	As described in Appendix "J" 2.

All Other Courses	
Mark	Description
Start Mark	Black conical buoy
Mark 1 & Gate marks	Orange conical buoy
Change of Course mark for Mark 1	Orange conical buoy with black band
Offset mark (see Appendix J 1, 1.5)	Yellow Pencil buoy
Finish Mark	Yellow cylindrical buoy

4. THE START

A boat starting later than 10 minutes after her starting signal will be scored Did Not Start (DNS). This changes RRS A4.1

A starting line inner limit mark may be laid near the Starting Vessel and shall be left on the same side as the Starting Vessel. (Protested by the Race Committee only. This alters RRS 60.1 and 60.3.)

5. TIME LIMIT

The time limit for the Melbourne to Geelong Race will be Sunset (2042hrs). For all other races the time limit will be 2 hours from the starting signal. (Please note General Sailing Instruction 14)

6. RACE COMMUNICATION

VHF channel 69 will be used as the Race Communications channel for all courses except for the Melbourne to Geelong Passage race which will be VHF channel 71.

APPENDIX "B"

PASSAGE RATING SERIES

1. SCHEDULE OF EVENTS

Except for the Melbourne to Geelong race, classes will be started in the order of: -

MultiHull Class:- then

Passage Rating Division 1 then:-

Passage Rating Division 2 then:-

Passage Rating Division 3 then:-

Passage Rating Division 4

Date	Race no.	Course area	Course type	Time of 1 st Warning Signal
FRIDAY 26th	1	Melbourne to Geelong Race Southern Start Line	Passage Race	0925hrs
SATURDAY 27th	2	Corio Bay Start Area "Z"	Special Course	1055hrs
	3	Corio Bay Start Area "Z"	Special Course	Asap after race 2
SUNDAY 28th	4	Corio Bay Start Area "Z"	Special Course	1055hrs
	Prize giving RGYC			1700hrs

The last time for warning signal on Sunday 28th is 1400 hrs

Please note: - Course Areas are as indicated in Appendix "K", Course Area Diagrams.

2. CLASS FLAGS

DIVISION	CLASS FLAG	BACKSTAY FLAG
Passage Race Mass Start	Int. Code Flag "D"	As noted below
Passage Rating Division 1	White	White
Passage Rating Division 2	Lime Green	Lime Green
Passage Rating Division 3	Dark Blue	Dark Blue
Passage Rating Division 4	Yellow	Yellow

3. COURSES

Other than the Melbourne to Geelong race, the course to be sailed will be selected from the list of courses, Appendix "J", 3. CORIO BAY COURSES and will be indicated by the numeral pennant displayed from the Starting Vessel.

The description of marks will be as described in Appendix "J"

4. THE START

A boat starting later than 10 minutes after her starting signal will be scored Did Not Start (DNS). This changes RRS A4.1

A starting line inner limit mark may be laid near the Starting Vessel and shall be left on the same side as the Starting Vessel. A breach of this SI is open to protest by the Race Committee only. This alters RRS 60.1 and 60.3.

5. TIME LIMIT

The time limit for all races Melbourne to Geelong Race will be Sunset (2042hrs). For all other races the time limit will be 5 hours from the starting signal or Sunset whichever is the earliest. (Please note General Sailing Instruction 14)

6. RACE COMMUNICATION

VHF channel 74 will be used as the Race Communications channel for all courses except for the Melbourne to Geelong Passage race which will be VHF channel 71.

APPENDIX "C"

PASSAGE SPINNAKER SERIES

1. SCHEDULE OF EVENTS

Except for the Passage Race, Melbourne to Geelong, classes will be started in the order of: -

Passage Spinnaker 1 then:-

Passage Spinnaker 2 then:-

Passage Spinnaker 3 then:-

Passage Spinnaker 4 then:-

Passage Non-Spinnaker then:-

Classic Yachts

Date	Race no.	Course area	Course type	Time of 1 st Warning Signal
FRIDAY 26th	1	Melbourne to Geelong Northern Start Line	Passage Race	0925hrs
SATURDAY 27th	2	Corio Bay Start Area "Y"	Special Course	1055hrs
	3	Corio Bay Start Area "Y"	Special Course	Asap after race 2
SUNDAY 28th	4	Corio Bay Start Area "Y"	Special Course	1055hrs
	Prize giving RGYC			1700hrs

The last time for a warning signal on Sunday 28th is 1400hrs

Please note: - Course Areas are as indicated in Appendix "K", Course Area Diagrams.

2. CLASS FLAGS

DIVISION	CLASS FLAG	BACKSTAY FLAG
Passage Race Mass Start	Int. Code Flag "K"	As noted below
Passage Spinnaker 1	Purple	Purple
Passage Spinnaker 2	Light Blue	Light Blue
Passage Spinnaker 3	Pink	Pink
Passage Spinnaker 4	Int. Code Flag "G"	No backstay flag

All boats shall fly the coloured flag provided from the backstay or the aftermost starboard shroud whilst racing, above any event sponsors pennant.

3. COURSES

Other than the Melbourne to Geelong race, the course to be sailed will be selected from the list of courses, Appendix "J"-3 CORIO BAY COURSES and will be indicated by the numeral pennant displayed from the Starting Vessel. The description of marks will be as described in Appendix "J"

4. THE START

A boat starting later than 10 minutes after her starting signal will be scored Did Not Start (DNS). This changes RRS A4.1. A starting line inner limit mark may be laid near the Starting Vessel and shall be left on the same side as the Starting Vessel. A breach of this SI is open to protest by the Race Committee only. This changes RRS 60.1 and 60.3.

5. TIME LIMIT

The time limit for the Melbourne to Geelong Race will be Sunset (2042 hrs). For all other races the time limit will be 5 hours from the starting signal. (Please note General Sailing Instruction 14)

6. RACE COMMUNICATION

VHF channel 77 will be used as the Race Communications channel for all courses except for the Melbourne to Geelong Passage race which will be VHF channel 71.

APPENDIX "D"

PASSAGE NON-SPINNAKER SERIES CLASSIC YACHT SERIES

1. SCHEDULE OF EVENTS

Except for the Passage Race, Melbourne to Geelong, classes will be started in the order of: -

Passage Spinnaker 1 then:-

Passage Spinnaker 2 then:-

Passage Spinnaker 3 then:-

Passage Non-Spinnaker then:-

Classic Yachts

Date	Race no.	Course area	Course type	Time of 1 st Warning Signal
FRIDAY 26th	1	Melbourne to Geelong Northern Start Line	Passage Race	0925hrs
SATURDAY 27th	2	Corio Bay Start Area "Y"	Special Course	1055hrs
	3	Corio Bay Start Area "Y"	Special Course	1055hrs
SUNDAY 28th	4	Corio Bay Start Area "Y"	Special Course	1055hrs
	Prize giving RGYC			1700hrs

The last time for a warning signal on Sunday 28th is 1400hrs

Please note: - Course Areas are as indicated in Appendix "K", Course Area Diagrams.

2. CLASS FLAGS

DIVISION	CLASS FLAG	BACKSTAY FLAG
Passage Race Mass Start	Int. Code Flag "K"	Dark Green Flag
Passage Non-Spinnaker	Dark Green Flag	Dark Green Flag
Classic Yachts	Black Flag	Black Flag

3. COURSES

Other than the Melbourne to Geelong race, the course to be sailed will be selected from the list of courses, Appendix "J"-3. CORIO BAY COURSES and will be indicated by a numeral pennant displayed from the Starting Vessel. The description of marks will be as described in Appendix "J"

4. THE START

Boats starting later than 10 minutes after her starting signal will be scored Did Not Start (DNS). This changes RRS A4.1

A starting line inner limit mark may be laid near the Starting Vessel and shall be left on the same side as the Starting Vessel. A breach of this SI is open to protest by the Race Committee only. This alters RRS 60.1 and 60.3.

5. TIME LIMIT

The time limit for the Melbourne to Geelong Race will be Sunset (2042 hrs). For all other races the time limit will be 5 hours from the starting signal. (Please note General Sailing Instruction 14)

6. RACE COMMUNICATION

VHF channel 77 will be used as the Race Communications channel for all courses except for the Melbourne to Geelong Passage race which will be VHF channel 71.

7. SAIL LIMITATION

Passage Non-Spinnaker Class shall not carry spinnakers but may pole out a headsail. Headsails shall be attached to a forestay over the full length of the luff.

APPENDIX "E"

MULTIHULL SERIES

1. SCHEDULE OF EVENTS

Except for the Passage Race, Melbourne to Geelong, classes will be started in the order of:

Multihulls Class then:-

Passage Rating Division 1 etc ...

Date	Race no.	Course area	Course type	Time of Warning Signal
FRIDAY 26th	1	Melbourne to Geelong - Southern Start Line	Passage	0925hrs
SATURDAY 27th	2	Corio Bay Start Area "Z"	Long Special Course	1055hrs
SUNDAY 28th	3	Corio Bay Start Area "Z"	Special Course	1055hrs
	Prize giving RGYC			1700hrs

The last time for warning signal on Sunday 28th is 1400 hrs.

Please note: - Course Areas are as indicated in Appendix "K", Course Area Diagrams

2. CLASS FLAGS

DIVISION	CLASS FLAG	BACKSTAY FLAG
Passage Race Mass Start	Int. Code Flag "D"	As noted below
Multihull Class	Int. Code Flag "G"	No backstay flag

3. COURSES AND MARKS

Other than the Melbourne to Geelong race, the course to be sailed will be selected from the list of courses, Appendix "J"-3. CORIO BAY COURSES and will be indicated by a numeral pennant displayed from the Starting Vessel. The description of marks will be as described in Appendix "J"

4. THE START

A boat starting later than 10 minutes after her starting signal will be scored Did Not Start (DNS). This changes RRS A4.1

A starting line inner limit mark may be laid near the Starting Vessel and shall be left on the same side as the Starting Vessel. A breach of this SI is open to protest by the Race Committee only. This alters RRS 60.1 and 60.3.

5. TIME LIMIT

The time limit for the Geelong to Melbourne Race will be Sunset (2042 hrs). For all other races the time limit will be 5 hours from the starting signal. (Please note General Sailing Instruction 14)

6. RACE COMMUNICATION

VHF channel 74 will be used as the Race Communications channel for all courses except for the Melbourne to Geelong Passage race which will be VHF channel 71.

7. PENALTIES

For Multihulls Class and Double-Handed Class RRS 44.2 is changed so that only one turn, including one tack and one gybe, is required.

APPENDIX "F"

**INTERNATIONAL MELGES 24 CLASS AUS. CHAMPS.
GUYON WILSON CLASS SERIES
S80 SERIES**

1. SCHEDULE OF EVENTS

Races will be started in the order of:-

Int. Melges 24 Class then:-

Guyon Wilson Class then:-

S80 Class

Date	Race no.	Course area	Course type	Time of 1 st Warning Signal
Thursday 25th	Melges 24 – Race 1	Course Area "B"	W/L	1325hrs
FRIDAY 26th	Melges 24, Guyon Wilson, – 3 races	Course Area "A"	W/L	1325hrs
	S80, Melbourne to Geelong race as per Appendix "J"	Port Phillip	Passage	0930hrs
SATURDAY 27th	Melges 24, Guyon Wilson, S80 - 3 races	Course Area "A"	W/L	1225hrs
SUNDAY 28th	Melges 24, Guyon Wilson, - 2 races S80 - 1 race	Course Area "A"	W/L	1225hrs
	Prize giving RGYC			1700hrs

The last time for warning signal on Sunday 28th is 1500 hrs.

Please note: - Course Areas are as indicated in Appendix "K", Course Area Diagrams

2. CLASS FLAGS

DIVISION	CLASS FLAG
Guyon Wilson Class	Int. Code Flag "E"
International Melges 24 Class	Int. Code Flag "D"
S80	Int. Code Flag "F"

3. COURSES

The course to sail will be selected from the list of courses, Windward / Leeward Courses, in Appendix "J" and will be indicated by the numeral pennant displayed from the Starting Vessel.

Description of Marks

Windward Leeward Courses	
Start Mark	Black conical buoy
Marks 1 & Gate marks	Orange cylindrical buoy
Mark 2	Yellow cone buoy
Change of Course mark for Mark 1	Orange cylindrical buoy with black band
Change of Course mark for Mark 2	Red and White cylindrical buoy
Offset mark (see Appendix J, 1.5)	Yellow Pencil buoy
Finish Mark	Yellow cylindrical buoy

4. THE START

A boat starting later than 10 minutes after her starting signal will be scored Did Not Start (DNS). This changes RRS A4.1

5. TIME LIMIT

The time limit for the Melbourne to Geelong Passage Race will be Sunset (2042 hrs). For all other races the time limit will be 2.5 hours. (Please note General Sailing Instruction 14)

6. RACE COMMUNICATION

VHF channel 15 will be used as the Race Communications channel for all courses except for the Melbourne to Geelong Passage race which will be VHF channel 71.

APPENDIX "G"

PASSAGE MINI SERIES

1. SCHEDULE OF EVENTS

Date	Race no.	Course area	Course type	Time of 1 st Warning Signal
FRIDAY 26 th	1	Melbourne to Geelong Race Northern Start Line	Passage Race	0925hrs
SATURDAY 27 th	2	Corio Bay Start Area "Z"	Special Course	1055hrs
SUNDAY 28 th	Prize giving RGYC			1700hrs

Please note: - Course Areas are as indicated in Appendix "K", Course Area Diagrams.

2. CLASS FLAGS

DIVISION	CLASS FLAG	BACKSTAY FLAG
Passage Race Mass Start	Int. Code Flag "K"	Grey Flag
Passage Mini Class	Grey Flag	Grey Flag

3. COURSES

Other than the Melbourne to Geelong race, the course to be sailed will be selected from the list of courses, Appendix "J"- COURSES and will be indicated by a numeral pennant displayed from the Starting Vessel.

The description of marks will be as described in Appendix "I"

4. THE START

Boats starting later than 10 minutes after her starting signal will be scored Did Not Start (DNS). This changes RRS A4.1

A starting line inner limit mark may be laid near the Starting Vessel and shall be left on the same side as the Starting Vessel. A breach of this SI is open to protest by the Race Committee only. This alters RRS 60.1 and 60.3.

5. TIME LIMIT

The time limit for the Melbourne to Geelong Race will be Sunset (2042 hrs). For all other races the time limit will be 5 hours from the starting signal or Sunset whichever is the earliest. (Please note General Sailing Instruction 14)

6. RACE COMMUNICATION

VHF channel 74 will be used as the Race Communications channel for all courses except for the Melbourne to Geelong Passage race which will be VHF channel 71.

7. SAIL LIMITATION

Passage Mini Class shall not fly spinnakers but may pole out a headsail. Headsails shall be attached to a forestay over the full length of the luff.

APPENDIX "H"

MORNINGTON PENINSULA SERIES

1. SCHEDULE OF EVENTS

Except for the Passage Race, Mornington to Geelong, classes will be started in Passage Spinnaker Divisions as in Appendix C and D.

Date	Race no.	Course area	Course type	Time of Warning Signal
FRIDAY 26th	1	Mornington to Geelong	Passage	0925hrs
SATURDAY 27th	2	Corio Bay Start Area "Y"&"Z"	Special Course	1055hrs
	3	Corio Bay Start Area "Y"&"Z"	Special Course	Asap after race 2
SUNDAY 28th	4	Corio Bay Start Area "Y"&"Z"	Special Course	1055hrs
	Prize giving RGYC			1700hrs

The last time for a warning signal on Sunday 28th is 1400hrs

Please note: - Course Areas are as indicated in Appendix "K", Course Area Diagrams.

2. CLASS FLAGS

DIVISION	CLASS FLAG	BACKSTAY FLAG
Passage Race Mass Start	Int. Code Flag "W"	No Backstay Flag

For races at Geelong, Mornington Peninsula Series boats will be allocated into appropriate division within the main fleet in Passage Spinnaker and Passage non-Spinnaker Classes and will fly the allocated backstay flag.

3. COURSES

Other than the Mornington to Geelong race, the course to be sailed will be selected from the list of courses, Appendix "J"-3. CORIO BAY COURSES and will be indicated by a numeral pennant displayed from the Starting Vessel.

The description of marks will be as described in Appendix "J"

4. THE START

Boats starting later than 10 minutes after her starting signal will be scored Did Not Start (DNS). This changes RRS A4.1

A starting line inner limit mark may be laid near the Starting Vessel and shall be left on the same side as the Starting Vessel. A breach of this SI is open to protest by the Race Committee only. This alters RRS 60.1 and 60.3.

5. TIME LIMIT

The time limit for the Mornington to Geelong Race will be Sunset (2042 hrs). For all other races the time limit will be 5 hours from the starting signal. (Please note General Sailing Instruction 14)

6. RACE COMMUNICATION

VHF channel 77 will be used as the Race Communications channel for all courses except for the Mornington to Geelong Passage race which will be VHF channel 71.

7. SCORING

Boats will be scored against other Morning Peninsula Series boats only in the various Divisions. All races will count to overall scores.

APPENDIX "I"

1. Be Safe!

2. Observe **Victoria Marine Safety Regulations and in particular Rule Part 6, 112 (2)**

Nothing in these Rules shall exonerate any vessel, or the owner, master, or crew thereof, from the consequences of any neglect to comply with these Rules or of the neglect of any precaution which may be required by the ordinary practice of seamen, or by the special circumstances of the case.

In complying with these Rules due regard shall be had to all dangers of navigation and collision and to any special circumstances, including the limitations of the vessels involved, which may make a departure from these Rules necessary to avoid immediate danger.

What this means is that if you're about to be involved in a collision, having stood on or give way in accordance with the Rule; every party involved is responsible in taking avoiding action to prevent a collision.

3. Local Rules require sail craft to keep out of the way of large ships. Do not impede the safe passage of Commercial Vessel Shipping. Pass at least 500m ahead of their bow.

4. Be mindful of larger ships' bow flare. When closing any vessel, to prevent being overrun ensure you remain within sight of the Master/Officer of the Watch on the vessel's bridge. Beware of overhanging bows and other parts of ship that might obstruct this line of sight. This means that your vessel may disappear from sight inside 500m from the bows of large ships.

5. All Skippers are reminded of their responsibility under rule 9(b) of the IRPCS, (b) "A vessel of less than 20 metres in length or a sailing vessel shall not impede the passage of a vessel which can safely navigate only within a narrow channel or fairway."

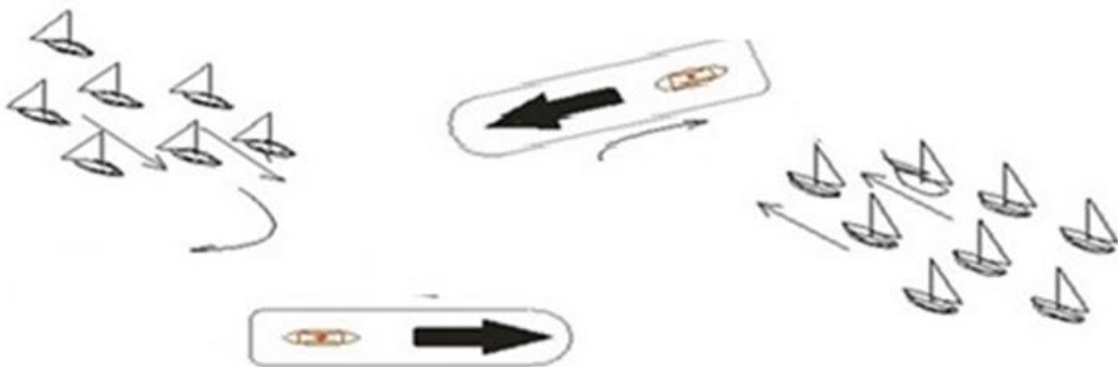
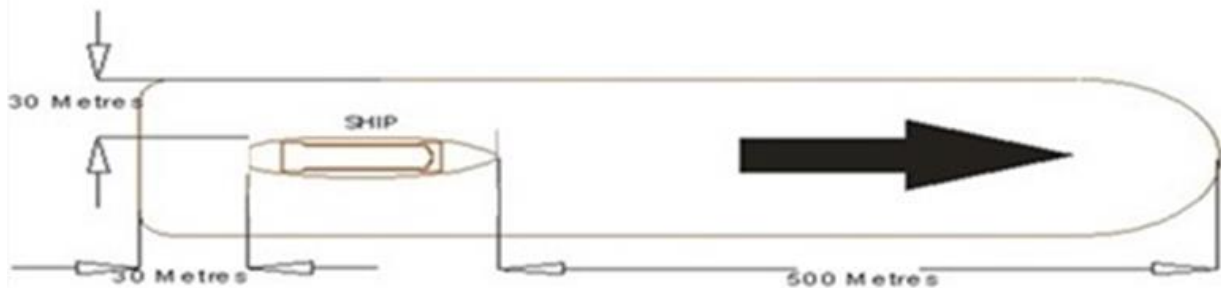
6 Shipping Sound Signal Meanings:

One short blast – I am altering course to starboard (right).

Two short blasts – I am altering course to port (left).

Three short blasts – I am operating engines astern (stopping).

Five (or more) short blasts – I'm unsure of your intentions and I doubt whether you are taking enough avoiding action to avoid collision.



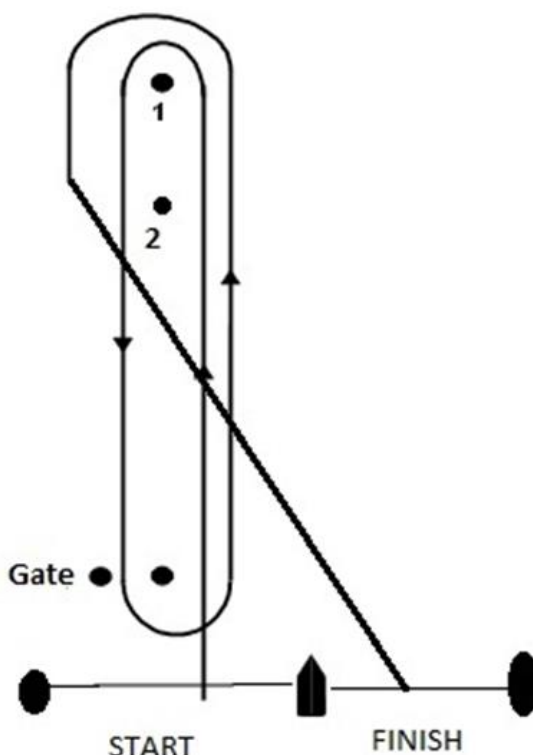
APPENDIX "J"

COURSES

1 WINDWARD / LEEWARD COURSES.

- 1.1 The starting line will be between the signal mast, displaying an orange flag on the committee vessel and a port-end starting mark.
- 1.2 A starting line inner limit mark may be laid near the Starting Vessel and shall be left on the same side as the Starting Vessel. A breach of this SI is open to protest by the Race Committee only. This alters RRS 60.1 and 60.3.
- 1.3 The magnetic bearing to the first mark may be displayed from the Starting Vessel at the warning signal.
- 1.4 For all courses, boats shall sail between the Gate marks from the direction of the previous mark and round either Gate mark. If only one Gate mark is set, boats shall round the mark to port.
- 1.5 An **offset mark** may be laid approximately 5 boat lengths to port of Mark 1. If laid, boats shall round the offset mark to port after rounding Mark 1.
- 1.6 To change the next leg of the course, the race committee will lay a new mark (or move the finishing line) and remove the original mark as soon as practicable. When in a subsequent change a new mark is replaced, it will be replaced by an original mark.
- 1.7 The finishing line will be between the signal mast, displaying a blue flag on the Finishing Vessel and a nearby finishing mark.
- 1.8 The mark descriptions are detailed in each Class or Division's Appendix to sailing instructions. Mark 2 will not be laid when only one Class or Division are sailing on a course area.
- 1.9 The diagram below shows the course to sail. The Course Number to be sailed will be indicated by the display of a numeral pennant on the Starting Vessel.

COURSE No.	COURSE TO SAIL (All marks to Port)
1	START - 1 - FINISH
2	START - 1 - Gate - 1 - FINISH
3	START - 1 - Gate - 1 - Gate - 1 - FINISH
4	START - 2 - FINISH
5	START - 2 - Gate - 2 - FINISH
6	START - 2 - Gate - 2 - Gate - 2 - FINISH



2. PASSAGE RACES TO GEELONG

2.1 Melbourne to Geelong Passage Race (distance is approximately 31.2 nm)

2.2 REPORTING REQUIREMENTS FOR MELBOURNE TO GEELONG PASSAGE RACE

All boats shall report their intention to start in the Melbourne to Geelong Passage Race by Short Message Service (SMS) on Friday 26th January as detailed below:-

The race committee will contact each yacht by SMS between 0730 hrs and 0800 hrs. The SMS message will provide a boat specific Web link. Each yacht shall respond via the Web link by 0830hrs indicating her intention to start (Y or N) and the number of Persons on Board (P.O.B.) Boats that have **not** responded by 0830hrs will be contacted by "Race Control Mobile" on VHF Channel 73 from 0830hrs to receive a report of her intention to start and the number of P.O.B.

Note:- "Race Start" frequency will be VHF channel 71

Boats retiring from the race shall report to Race headquarters on VHF channel 71 asap.

Fifteen minutes after the start, radio control will be assumed by Royal Yacht Club of Victoria's vessel Royals 3. All radio traffic will be directed through the radio vessel until boats are inside Hopetoun Channel at which time Royal Geelong Yacht Club ("RG Base") will receive and transmit all radio traffic.

2.3 Starting Line (as shown in the following diagram), will be located in the vicinity of S 37° 53.3' E 144° 54.0'. The **Southern** starting line will be between the signal mast, displaying an orange flag, on a Committee Vessel and a port-end orange buoy.

The **Northern** starting line will be between the signal mast, displaying an orange flag, on a Committee Vessel and a port-end orange buoy.

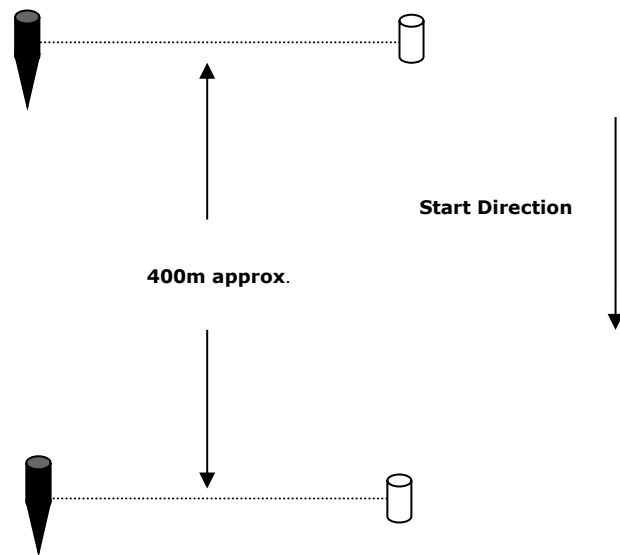
An inner distance mark (with the same description as each port end starting mark) may be laid a short distance from the Committee Vessel on each line.

A second Committee Boat may be in position at the extension of the port end of the lines.

The Warning Signal for all Classes will be made at 0925hrs

The sound of cannon fire may be used to draw attention to starting signals.

**NORTHERN START LINE
(Class Flag "K")**
Passage Spinn 1,2 & 3, Passage
Non-Spinnaker, Passage Mini
Series



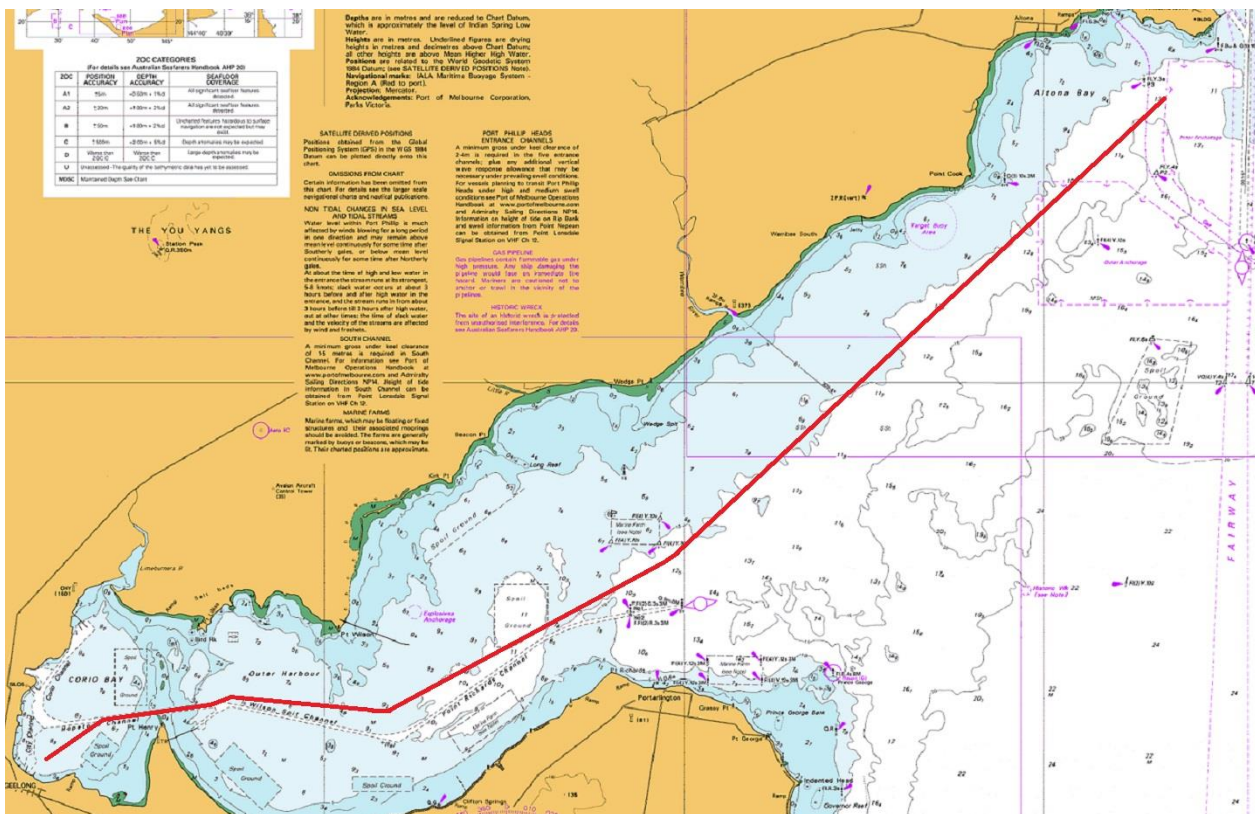
**SOUTHERN START LINE
(Class Flag "D")**
TP 52, Super40, Passage Rating
1, 2 & 3, Double-Handed, S80,
Multihulls



2.4 Marks and Course

The table below shows the order and side which marks are to be rounded.

COURSE MARK	MARK DESCRIPTION	REQUIRED SIDE
STARTING LINE	As described above (2.3)	
WILSON SPIT LAID MARK	Red & white cone mark	Starboard
ALCOA OUTER	Outer Lead Beacon	Port
HOPETOUN CHANNEL 1	Beacon No. 1	Starboard
HOPETOUN CHANNEL 10	Beacon No. 10	Port
FINISHING LINE	As described below (2.5)	



Please note; the Marine Farm bounded as below is deemed to be Prohibited Water and an obstruction.

MARINE FARM NORTH EAST	Yellow Special Mark (approx. S 38° 03.00' E 144° 39.30')
MARINE FARM SOUTH EAST	Yellow Special Mark (approx. S 38° 03.56' E 144° 39.30')
MARINE FARM NORTH WEST	Un-buoyed (approx. S 38° 03.00' E 144° 37.96')
MARINE FARM SOUTH WEST	Yellow Special Mark (approx. S 38° 03.56' E 144° 37.96')

Competitors Please Note:

The Point Wilson Pier exclusion zone may be activated at any time by Notice to Mariners.

A fine of up to \$10,000 may be imposed for entry to the exclusion zones, accidental or not. The areas are under constant video surveillance and competitors must make themselves aware of the exact zone limits.

2.5 Finishing Line

Will be laid approximately 400 metres to the northeast of the RGYC Marina and will be between the signal mast, displaying a blue flag, on the starboard Finishing Vessel and the signal mast displaying a blue flag port-end Finishing Vessel. After finishing, please keep clear of boats finishing other races which may be in progress on Corio Bay.

2.6 Mornington to Geelong Passage Race (distance is approximately 33.2 nm)

2.7 REPORTING REQUIREMENTS FOR MORNINGTON TO GEELONG PASSAGE RACE

All boats shall report their intention to start in the Mornington to Geelong Passage Race by Short Message Service (SMS) on Friday 26th January as detailed below:-

The race committee will contact each yacht by SMS between 0730 hrs and 0800 hrs. The SMS message will provide a boat specific Web link. Each yacht shall respond via the Web link by 0830hrs indicating her intention to start (Y or N) and the number of Persons on Board (P.O.B.) Boats that have **not** responded by 0830hrs will be contacted by "Race Control Mobile" on VHF Channel 73 from 0830hrs to receive a report of her intention to start and the number of P.O.B.

Note:- "Race Start" frequency will be VHF channel 71

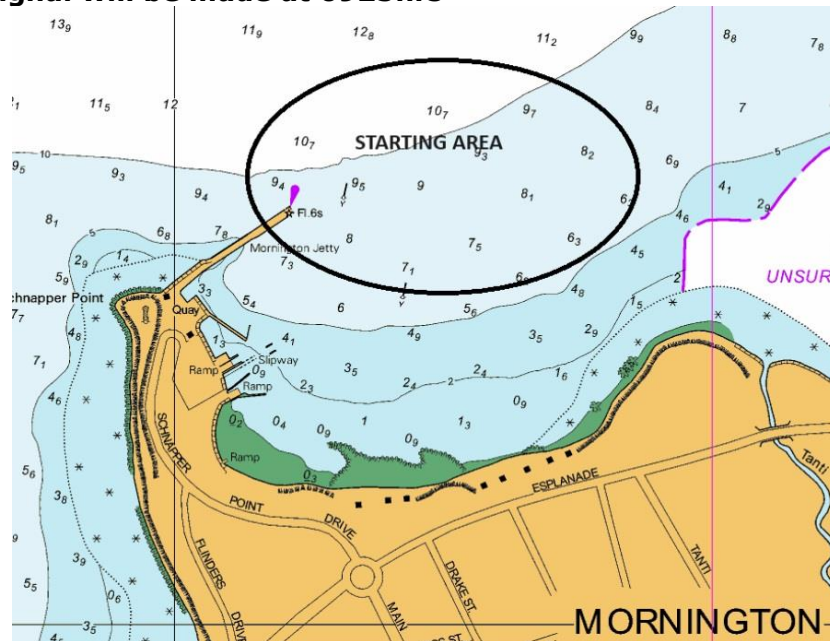
Boats retiring from the race shall report to Race headquarters on VHF channel 71 asap.

Fifteen minutes after the start, radio control will be assumed "Morning Mist". All radio traffic will be directed through the radio vessel until boats are inside Hopetoun Channel at which time Royal Geelong Yacht Club ("RG Base") will receive and transmit all radio traffic.

2.8 Starting Line will be located in the vicinity of S 38° 12.52' E 145° 01.2'. The Starting line shall be a line between the black line on the yellow disc on the face of the MYC Tower and the MYC orange spar mark. An inner distance mark may be laid.

A race committee boat may be in position at the extension of the outer end of the line.

The Warning Signal will be made at 0925hrs



2.8.2 Warning Signal

5 minutes before the Start time, a RED Light will go on and one sound may be made.

2.8.3 Preparatory Signal

4 minutes before the Start time the White Light will go on and one sound may be made.

2.8.4 One-minute Signal

1 minute before the Start time the White Light will go off and one sound may be made.

2.8.5 Starting Signal

The Start will be indicated by the removal of the RED Light and one sound may be made.

2.8.6 This Starting procedure amends RRS 26.

2.8.7 Recalls: The tower may broadcast the OCS boats on VHF ch 77 after the Starting Signal.

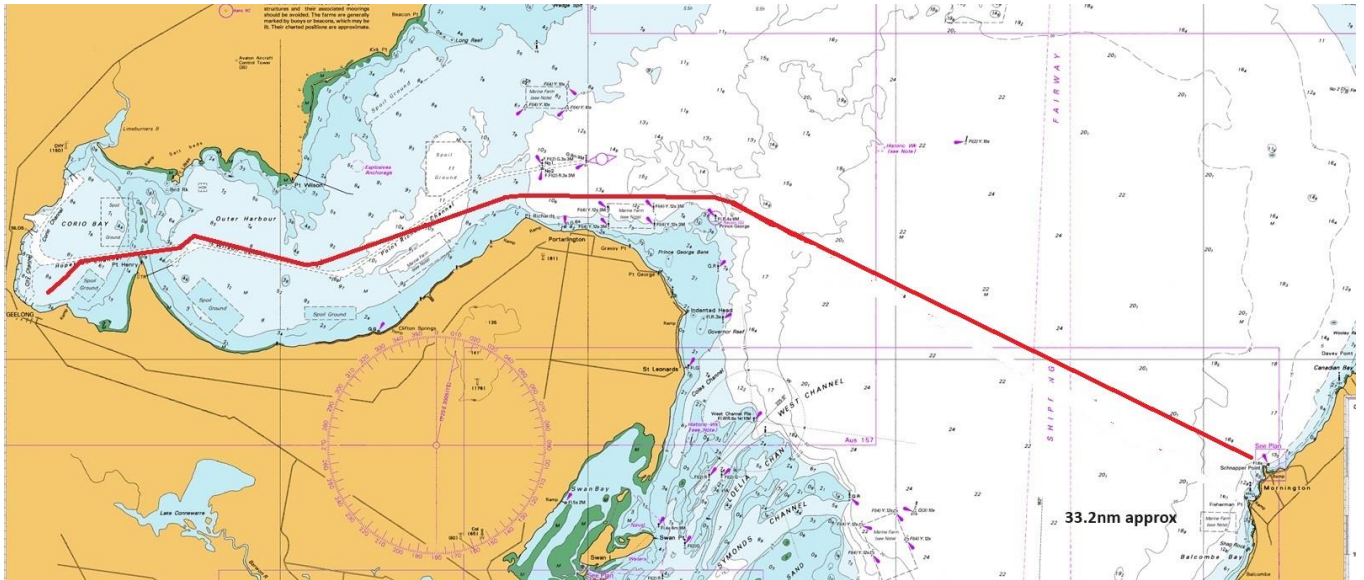
2.9 Marks and Course

The table below shows the order and side which marks are to be rounded.

COURSE MARK	MARK DESCRIPTION (3.5)	REQUIRED SIDE
STARTING LINE	As described above (2.8)	
PRINCE GEORGE BEACON	North Cardinal mark	Port
WILSON SPIT LAID MARK	Red & white cone mark	Starboard
ALCOA OUTER	Outer Lead Beacon	Port
HOPETOUN CHANNEL 1	Beacon No. 1	Starboard
HOPETOUN CHANNEL 10	Beacon No. 10	Port

FINISHING LINE

As described above in APPENDIX "J" 2.5



Please note; the Marine Farms near Portarlington and Clifton Springs, bounded as below are deemed to be Prohibited Water and an obstruction.

Portarlington

MARINE FARM NORTH EAST	Yellow Special Mark (approx. S 38° 06.30' E 144° 42.18')
MARINE FARM SOUTH EAST	Yellow Special Mark (approx. S 38° 06.64' E 144° 42.17')
MARINE FARM NORTH WEST	Yellow Special Mark (approx. S 38° 06.00' E 144° 40.68')
MARINE FARM SOUTH WEST	Yellow Special Mark (approx. S 38° 06.64' E 144° 42.17')

Clifton Springs

MARINE FARM NORTH EAST	Yellow Special Mark (approx. S 38° 06.73' E 144° 35.14')
MARINE FARM SOUTH EAST	Yellow Special Mark (approx. S 38° 07.19' E 144° 35.56')
MARINE FARM NORTH WEST	Yellow Special Mark (approx. S 38° 07.68' E 144° 33.43')
MARINE FARM SOUTH WEST	Yellow Special Mark (approx. S 38° 08.15' E 144° 33.83')

3 CORIO BAY COURSES (Refer Chart AUS 157)

- 3.1 The Course to be sailed will be indicated by the display of a numeral pennant from the Starting Vessel.
- 3.2 **Starting Line** The starting line for Starting Area "Y" will be laid to the Northeast of the RGYC Marina and will be a line between the signal mast displaying an orange flag on the Starting Vessel and a port-end red and white conical buoy.
The starting line for Starting Area "Z" will be laid to the East of the RGYC Marina and will be a line between the signal mast displaying an orange flag on the Starting Vessel and a port-end pink conical buoy.
An inner distance mark may be laid a short distance from the Starting Vessel and boats shall leave this mark on the same side as the Starting Vessel when starting.
- 3.3 **Laid Mark.** A laid mark may be specified as the first mark after the start. This mark will be a pink conical buoy for Start Area "Z" and a yellow cylindrical buoy for Start Area "Y". The mark will be laid approximately to windward of the starting line at approximately 0.5 – 0.9 nm from the starting line. The direction of rounding the mark will be indicated by the display of a green or red flag from the Starting Vessel – green for starboard rounding and red for port rounding. If no rounding signal flag is made, the mark is deleted from the course to sail.
- 3.4 **Finishing Line.** The finishing line will be laid to the East of the RGYC Marina and will be from a staff displaying a blue flag on the Finishing Vessel and a red and white conical finishing mark or the staff flying a blue flag on a Pin End Finishing vessel.
- 3.5 **Marks and Course**
The tables below show the mark descriptions, positions and the order and side which marks are to

be rounded.

COURSE MARK	MARK DESCRIPTION	POSITION
ALCOA OUTER	Point Henry Outer Lead Beacon	approx. S 38° 06.83', E 144° 27.72'
ARTHUR THE GREAT MARK	East Cardinal Mark	approx. S 38° 04.64', E 144° 33.18'
CB 1	Yellow cone mark	approx. S 38° 05.55' E 144° 24.20'
CB 2	Yellow cone mark	approx. S 38° 07.61' E 144° 24.18'
CB 3	Yellow cone mark	approx. S 38° 07.60' E 144° 23.55'
CB 4	Yellow cone mark	approx. S 38° 07.74' E 144° 22.15'
CB 5	Yellow cone mark	approx. S 38° 06.20' E 144° 22.93'
CB 6	Yellow cone mark	approx. S 38° 06.52' E 144° 24.01'
CURLEWIS LAID MARK	Yellow conical buoy	approx. S 38° 08.68', E 144° 31.0'
FoS 2	Yellow inflatable buoy	approx. S 38° 08.23' E 144° 26.8'
FoS 3	Yellow inflatable buoy	approx. S 38° 08.90', E 144° 28.6'
FoS 4	Yellow inflatable buoy	approx. S 38° 06.32', E 144° 27.7'
HOPETOUN CHANNEL 1	Beacon No. 1	approx. S 38° 07.05' E 144° 26.76'
HOPETOUN CHANNEL 2	Beacon No. 2	approx. S 38° 07.16' E 144° 26.78'
HOPETOUN CHANNEL 9	Beacon No. 9	approx. S 38° 07.32' E 144° 24.11'
HOPETOUN CHANNEL 10	Beacon No. 10	approx. S 38° 07.40' E 144° 24.12'
LAID MARK	as described in Courses 3.3	as described in Courses 3.3
OUTER EXPLOSIVES BEACON	Beacon	approx. S 38° 05.77', E 144° 33.15'
PRINCE GEORGE BEACON	North Cardinal mark	approx. S 38° 06.50' E 144° 44.10'
PT RICHARDS CHANNEL 18	Beacon 18(Q)	approx. S 38° 07.91', E 144° 32.08'
PT WILSON PIER SP Mk 4	Yellow Special Mark	approx. S 38° 06.57', E 144° 31.84'
PT WILSON PIER SP Mk 3	Yellow Special Mark	approx. S 38° 06.57', E 144° 33.24'
WILSON SPIT LAID MARK	Red & white conical buoy	approx. S 38° 07.56' E 144° 30.85'

Competitors Please Note :

A **total exclusion zone** exists to the west of Corio Channel Beacons numbers 7, 9, 10 and 11 and around the Refinery Pier and northern end of Lascelles wharf.

The **Point Wilson Pier exclusion** zone may be activated at any time by Notice to Mariners.

A fine of up to \$10,000 may be imposed for entry to the exclusion zones, accidental or not. The areas are under constant video surveillance and competitors must make themselves aware of the exact zone limits.

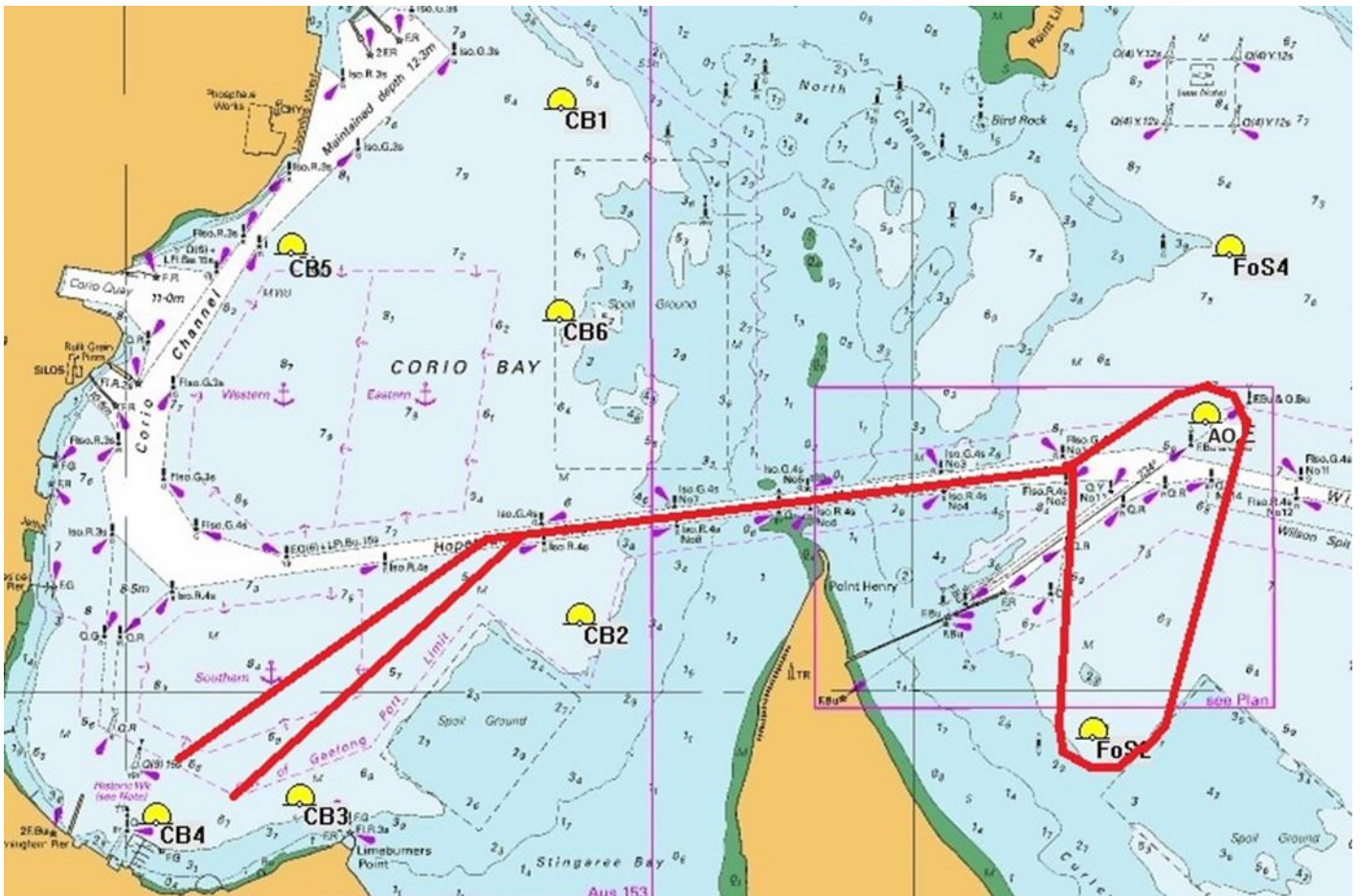
Corio Bay Course 1 (Indicated by display of Numeral Pennant 1) Distance: 12.2 nm approx..

COURSE MARK	REQUIRED SIDE
STARTING LINE	As per Courses 3.2
LAID MARK	As per 3.3
HOPETOUN CHANNEL 10	Starboard
HOPETOUN CHANNEL 1	Port
FoS 4	Starboard
ALCOA OUTER	Starboard
FoS 2	Starboard
HOPETOUN CHANNEL 2	Port
HOPETOUN CHANNEL 10	Port
FINISH	As per Courses 3.4



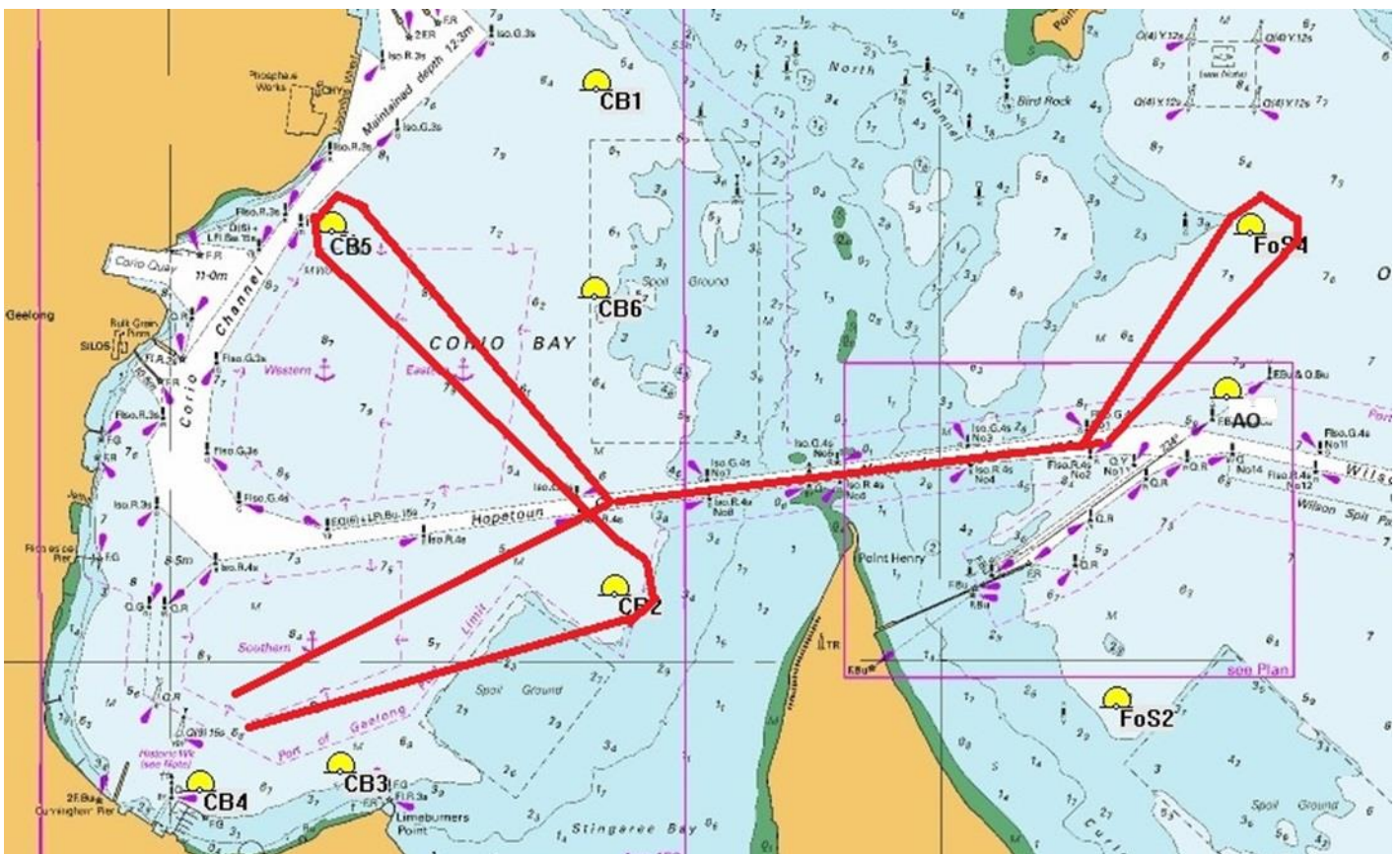
Corio Bay Course 2 (Indicated by display of Numeral Pennant 2) Distance: 10.5 nm approx..

COURSE MARK	REQUIRED SIDE
STARTING LINE	As per Courses 3.2
LAID MARK	As per 3.3
HOPETOUN CHANNEL 10	Starboard
HOPETOUN CHANNEL 1	Port
ALCOA OUTER	Starboard
FoS 2	Starboard
HOPETOUN CHANNEL 2	Port
HOPETOUN CHANNEL 10	Port
FINISH	As per Courses 3.4



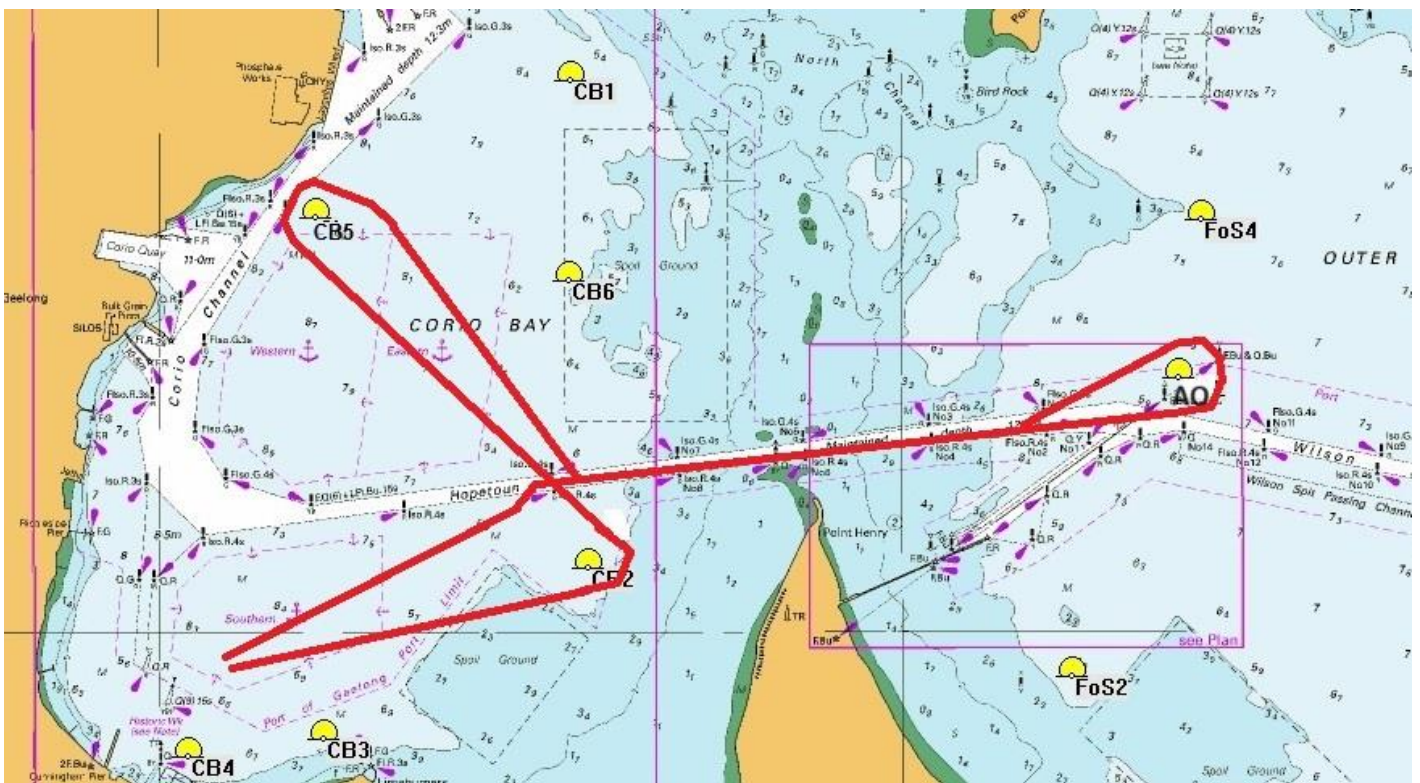
Corio Bay Course 3 (Indicated by display of Numeral Pennant 3) Distance: 13.0 nm approx..

COURSE MARK	REQUIRED SIDE
STARTING LINE	As per Courses 3.2
LAID MARK	As per 3.3
CB2	Port
CB5	Starboard
HOPETOUN CHANNEL 9	Port
HOPETOUN CHANNEL 1	Port
FOS 4	Starboard
HOPETOUN CHANNEL 1	Starboard
HOPETOUN CHANNEL 10	Port
FINISH	As per Courses 3.4



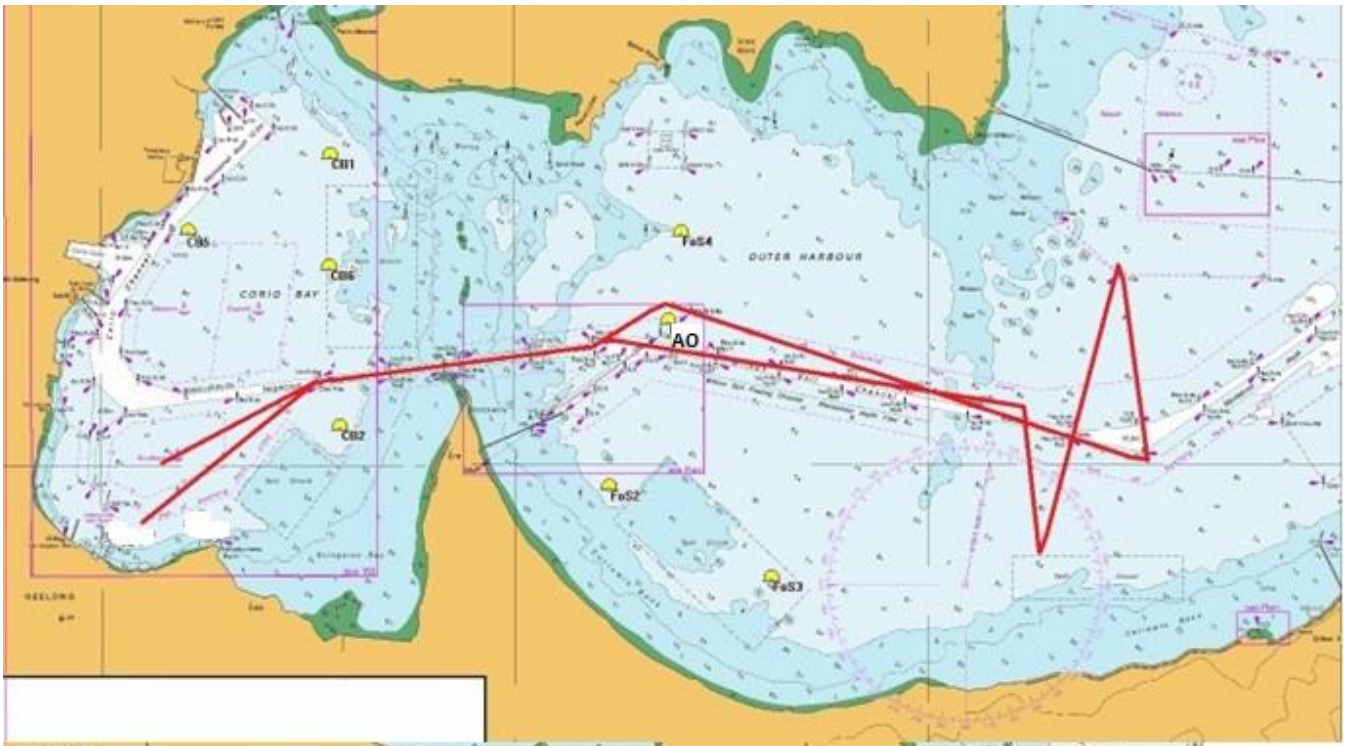
Corio Bay Course 4 (Indicated by display of Numeral Pennant 4) Distance: 11.8 nm approx..

COURSE MARK	REQUIRED SIDE
STARTING LINE	As per Courses 3.2
LAID MARK	As per 3.3
CB2	Port
CB5	Starboard
HOPETOUN CHANNEL 9	Port
HOPETOUN CHANNEL 1	Port
ALCOA OUTER	Starboard
HOPETOUN CHANNEL 1	Starboard
HOPETOUN CHANNEL 10	Port
FINISH	As per Courses 3.4



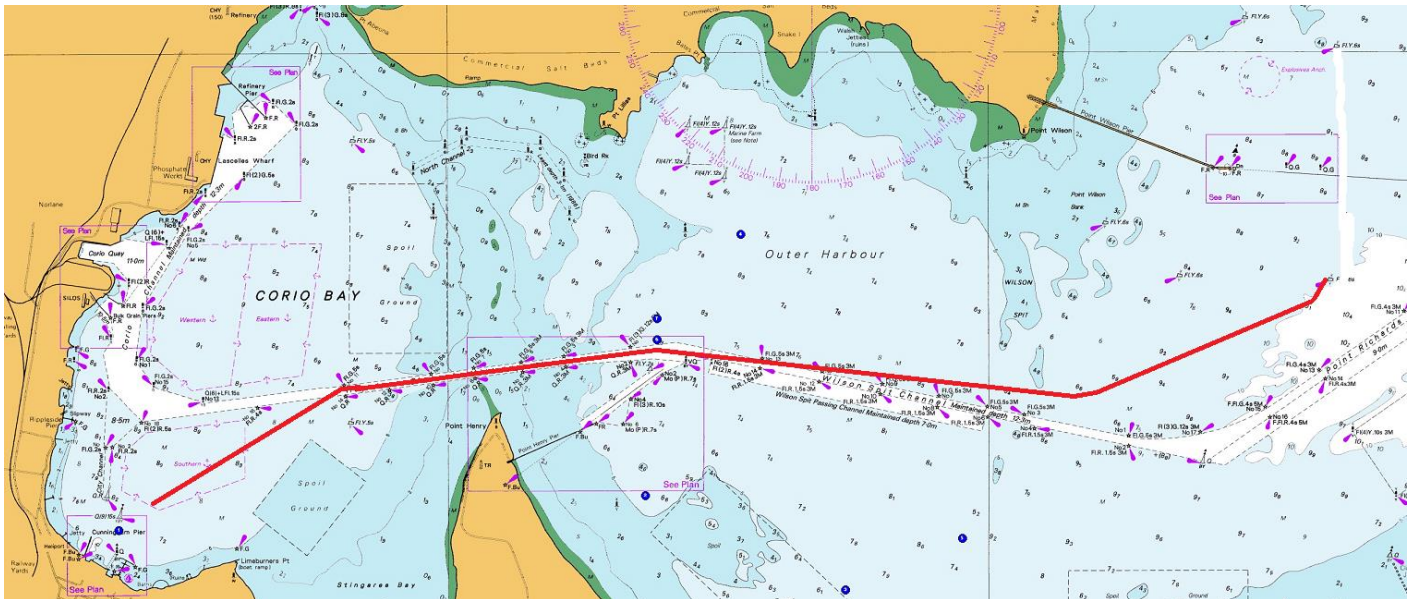
Corio Bay Course 5 (Indicated by display of Numeral Pennant 5) Distance: 20.2nm approx.

COURSE MARK	REQUIRED SIDE
STARTING LINE	As per Courses 3.2
LAID MARK	As per 3.3
HOPETOUN CHANNEL 10	Starboard
HOPETOUN CHANNEL 2	Starboard
WILSON SPIT LAID MARK	Starboard
CURLEWIS LAID MARK	Port
PT WILSON PIER SP Mk 4	Starboard
PT RICHARDS CHANNEL 18	Starboard
ALCOA OUTER	Port
HOPETOUN CHANNEL 1	Starboard
HOPETOUN CHANNEL 10	Port
FINISH	As per Courses 3.4



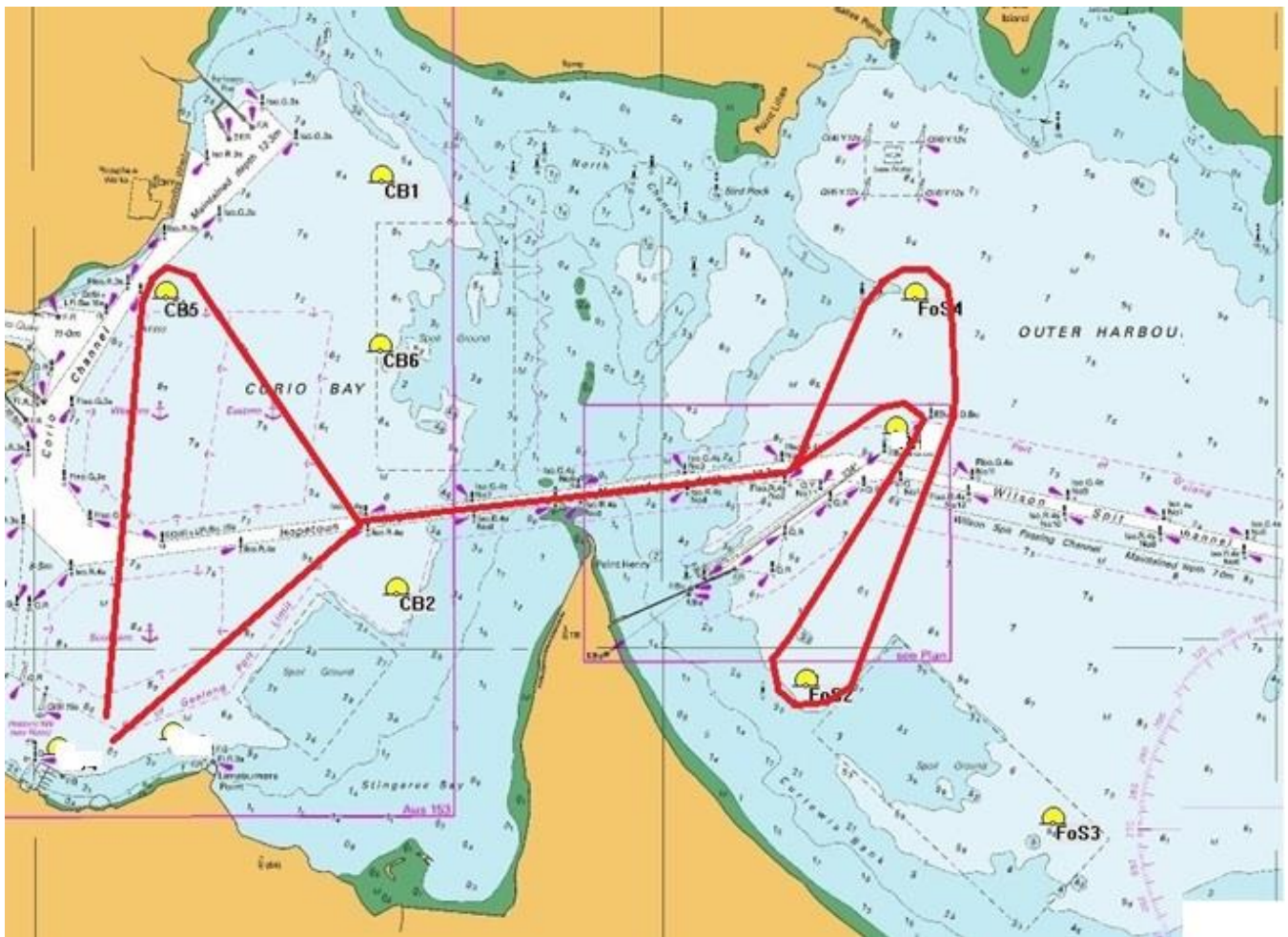
Corio Bay Course 6 (Indicated by display of Pennant 6) Distance: 19.3 nm approx.

COURSE MARK	REQUIRED SIDE
STARTING LINE	As per Courses 3.2
LAI D MARK	As per 3.3
HOPETOUN CHANNEL 10	Starboard
HOPETOUN CHANNEL 2	Starboard
WILSON SPIT LAID MARK	Port
PT WILSON PIER SP Mk 3	Starboard
WILSON SPIT LAID MARK	Starboard
ALCOA OUTER	Port
HOPETOUN CHANNEL 1	Starboard
HOPETOUN CHANNEL 10	Port
FINISH	As per Courses 3.4



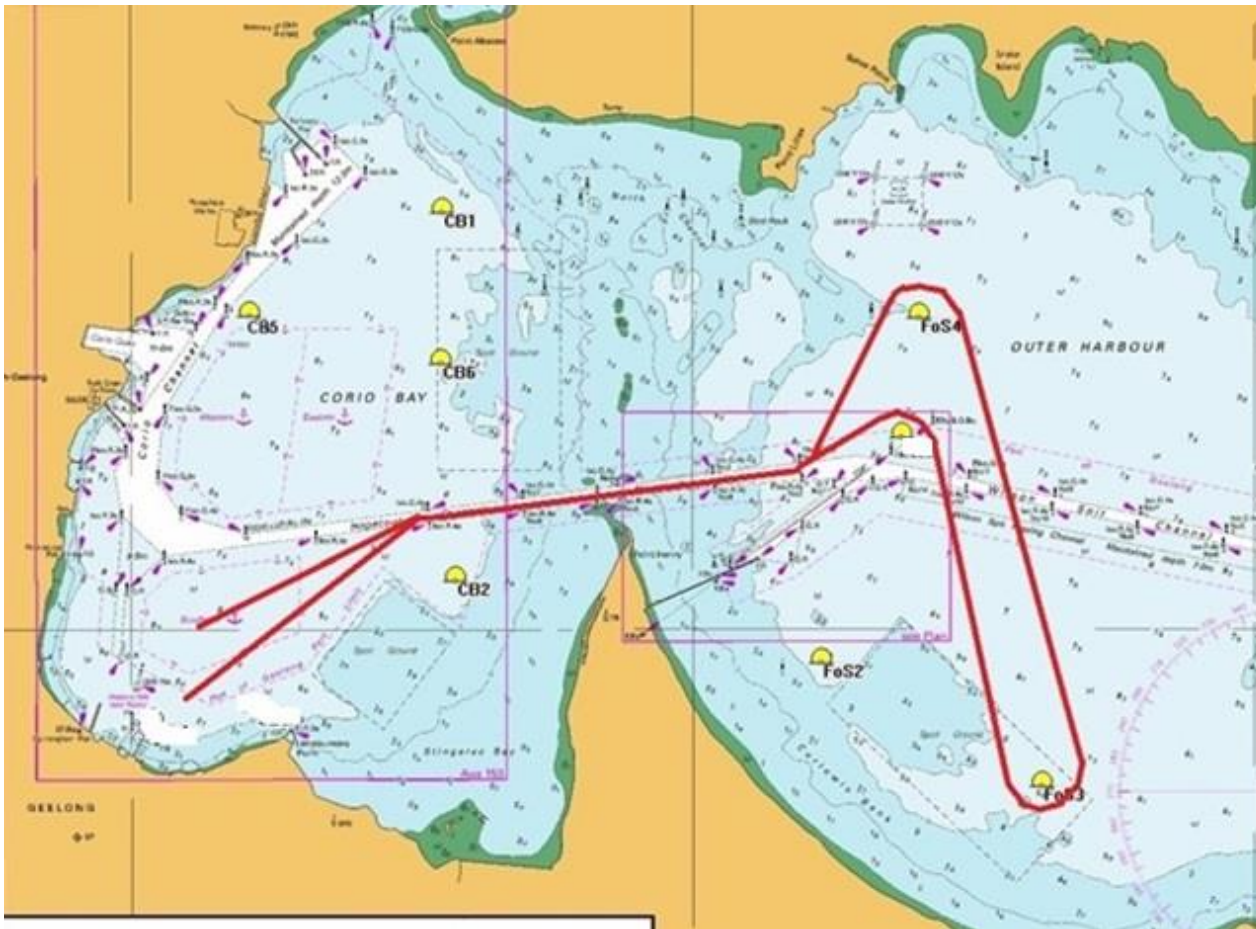
Corio Bay Course 7 (Indicated by display of Numeral Pennant 7) Distance: 13.8 nm approx..

COURSE MARK	REQUIRED SIDE
STARTING LINE	As per Courses 3.2
LAID MARK	As per 3.3
CB5	Starboard
HOPETOUN CHANNEL 9	Port
HOPETOUN CHANNEL 1	Port
FoS 4	Starboard
FoS 2	Starboard
ALCOA OUTER	Port
HOPETOUN CHANNEL 1	Starboard
HOPETOUN CHANNEL 10	Port
FINISH	As per Courses 3.4



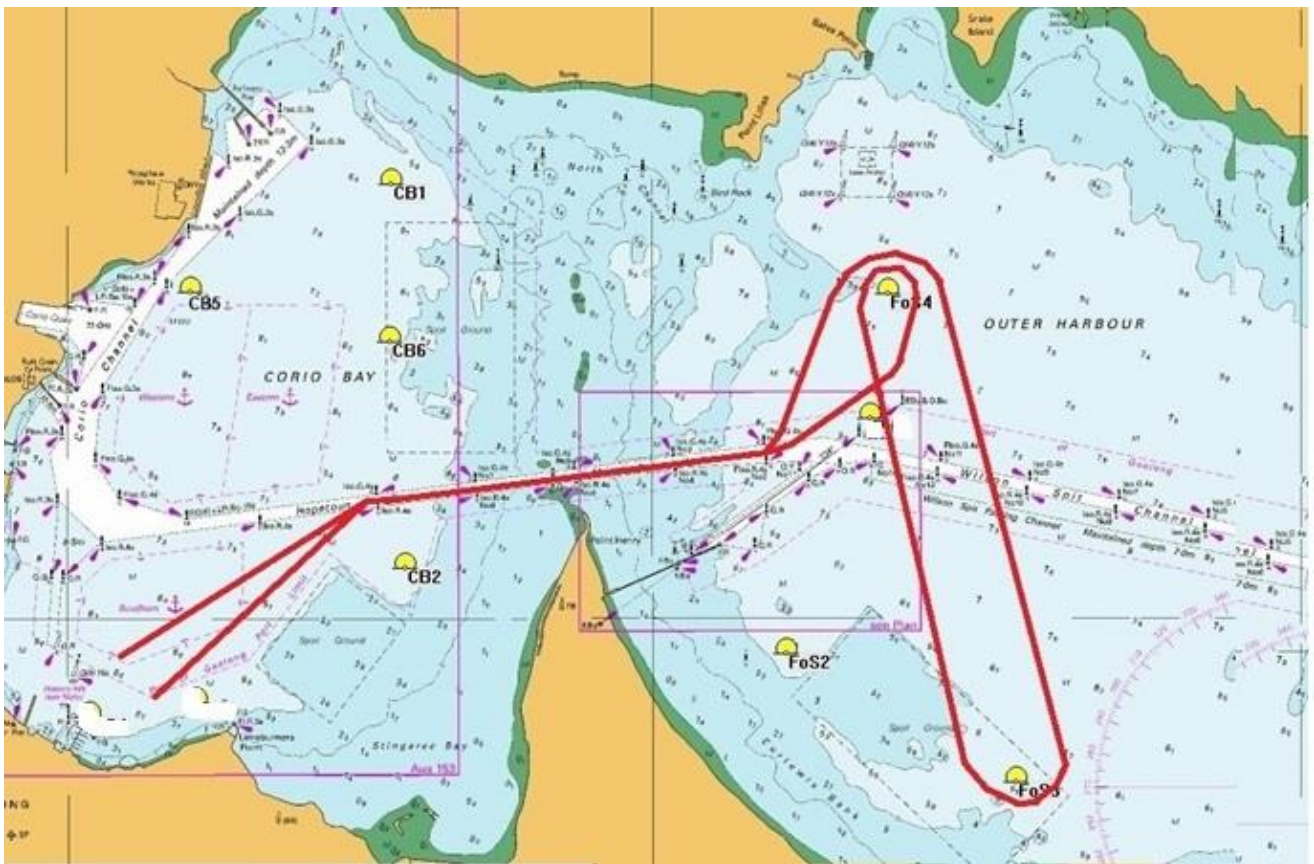
Corio Bay Course 8 (Indicated by display of Numeral Pennant 8) Distance: 14.2 nm approx.

COURSE MARK	REQUIRED SIDE
STARTING LINE	As per Courses 3.2
LAID MARK	As per 3.3
HOPETOUN CHANNEL 10	Starboard
HOPETOUN CHANNEL 1	Port
FoS 4	Starboard
FoS 3	Starboard
ALCOA OUTER	Port
HOPETOUN CHANNEL 1	Starboard
HOPETOUN CHANNEL 10	Port
FINISH	As per Courses 3.4



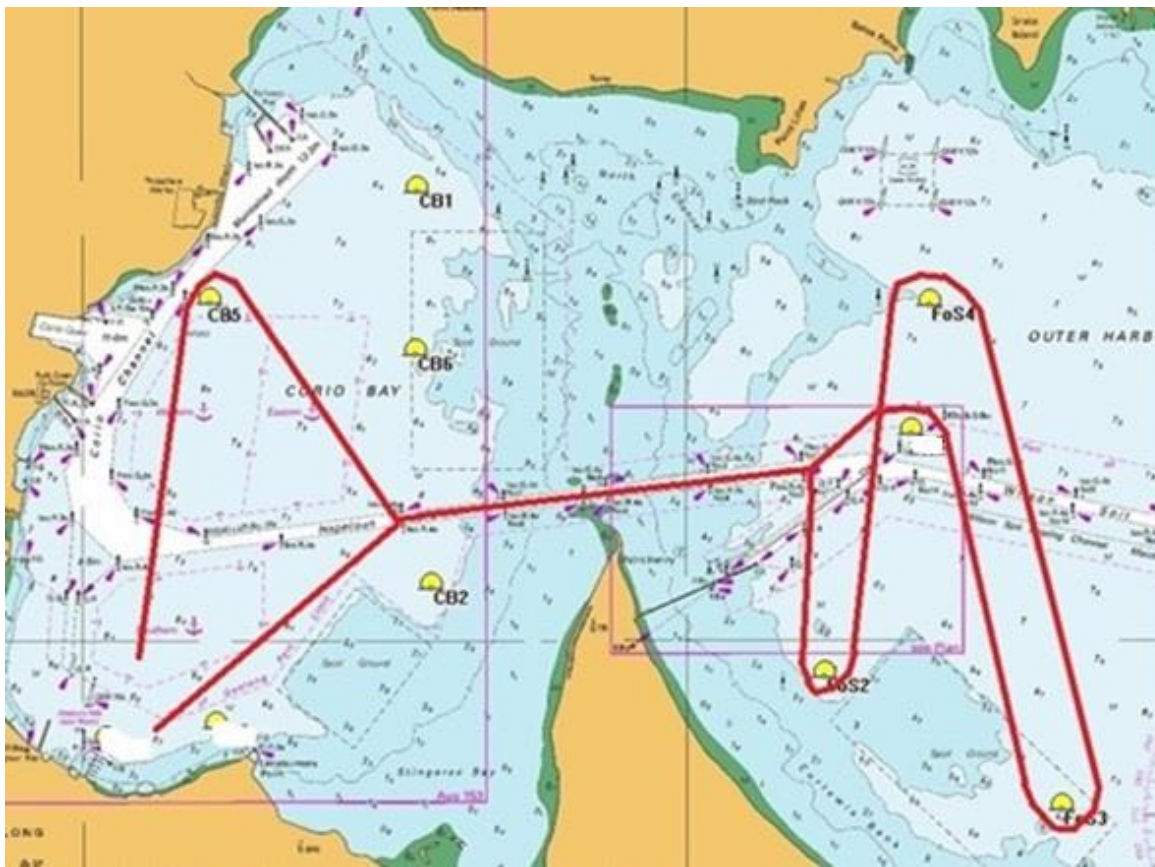
Corio Bay Course 9 (indicated by display of Numeral Pennant 9) Distance: 15.8 nm approx.

COURSE MARK	REQUIRED SIDE
STARTING LINE	As per Courses 3.2
LAID MARK	As per 3.3
HOPETOUN CHANNEL 10	Starboard
HOPETOUN CHANNEL 1	Port
FoS 4	Starboard
FoS 3	Starboard
FoS 4	Starboard
HOPETOUN CHANNEL 1	Starboard
HOPETOUN CHANNEL 10	Port
FINISH	As per Courses 3.4



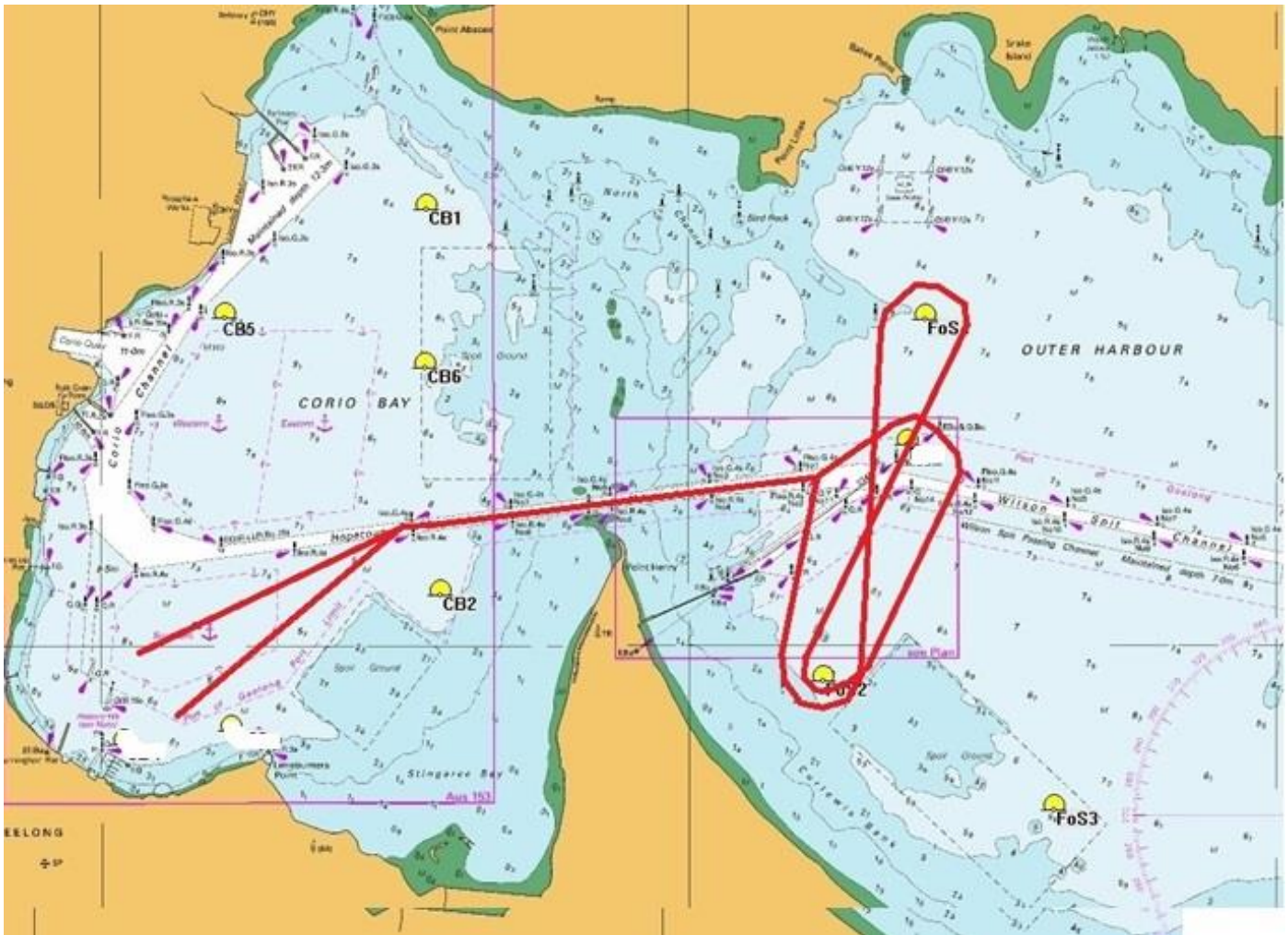
Corio Bay Course 10 (Indicated by display of Numeral Pennant 0) Distance: 18.2 nm approx..

COURSE MARK	REQUIRED SIDE
STARTING LINE	As per Courses 3.2
LAID MARK	As per 3.3
CB5	Starboard
HOPETOUN CHANNEL 9	Port
HOPETOUN CHANNEL 2	Starboard
FoS 2	Port
FoS 4	Starboard
FoS 3	Starboard
ALCOA OUTER	Port
HOPETOUN CHANNEL 1	Starboard
HOPETOUN CHANNEL 10	Port
FINISH	As per Courses 3.4



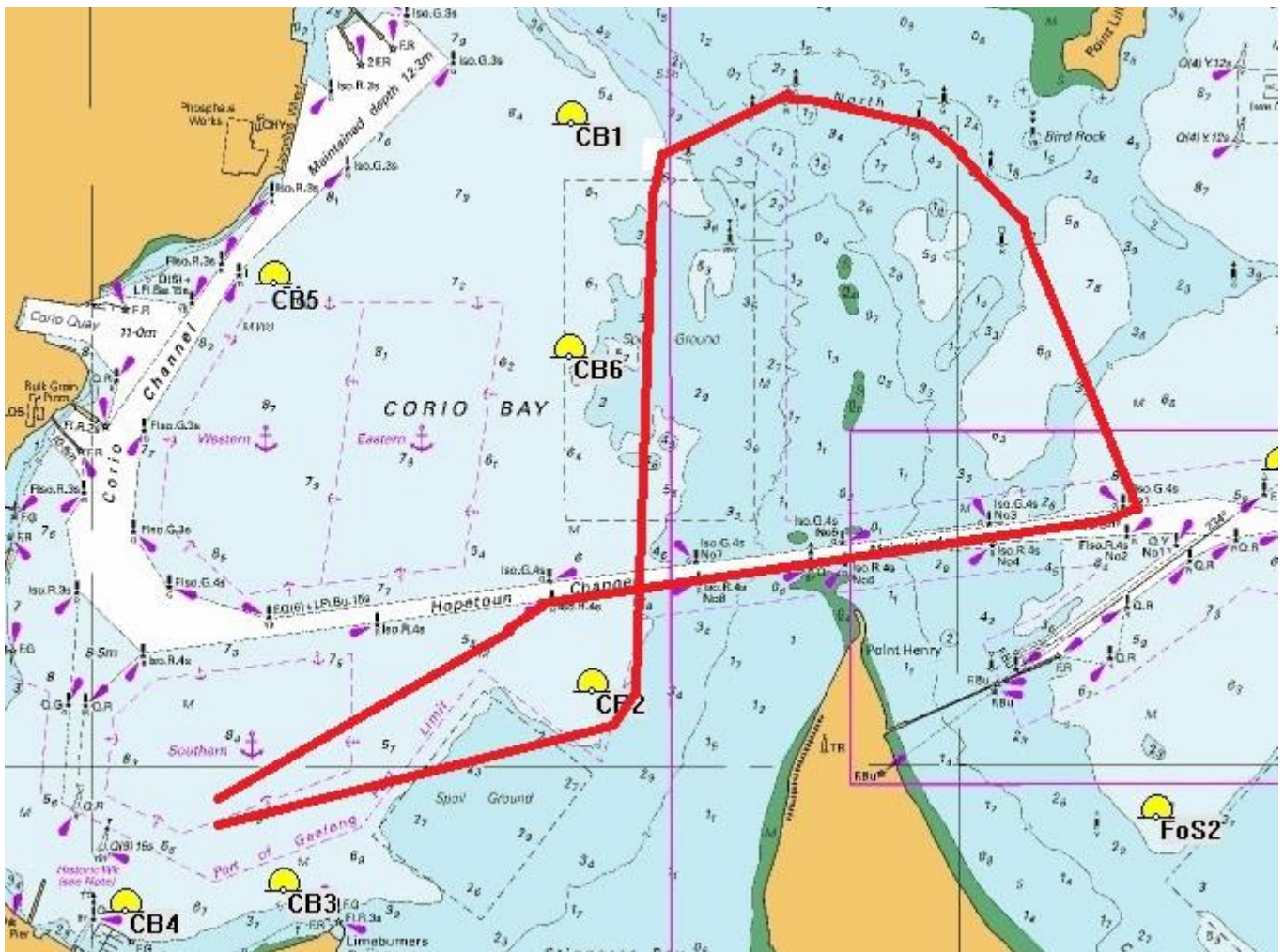
Corio Bay Course 11 (Indicated by display of Pennants 1 + A) Distance: 14.4 nm approx.

COURSE MARK	REQUIRED SIDE
STARTING LINE	As per Courses 3.2
LAID MARK	As per 3.3
HOPETOUN CHANNEL 10	Starboard
HOPETOUN CHANNEL 2	Starboard
FoS 2	Port
FoS 4	Starboard
FoS 2	Port
ALCOA OUTER	Port
HOPETOUN CHANNEL 1	Starboard
HOPETOUN CHANNEL 10	Port
FINISH	As per Courses 3.4



Corio Bay Course 12 (Indicated by display of Pennants 2 + A) Distance: 9.7 nm approx.

COURSE MARK	REQUIRED SIDE
STARTING LINE	As per Courses 3.2
LAID MARK	As per 3.3
CB 2	Port
NORTH CHANNEL RED	Starboard
NORTH CHANNEL RED	Starboard
NORTH CHANNEL RED	Starboard
NORTH CHANNEL RED	Starboard
HOPETOUN CHANNEL 1	Starboard
HOPETOUN CHANNEL 10	Port
FINISH	As per Courses 3.4



APPENDIX "K"

COURSE AREA DIAGRAMS

Corio Bay Course Areas

